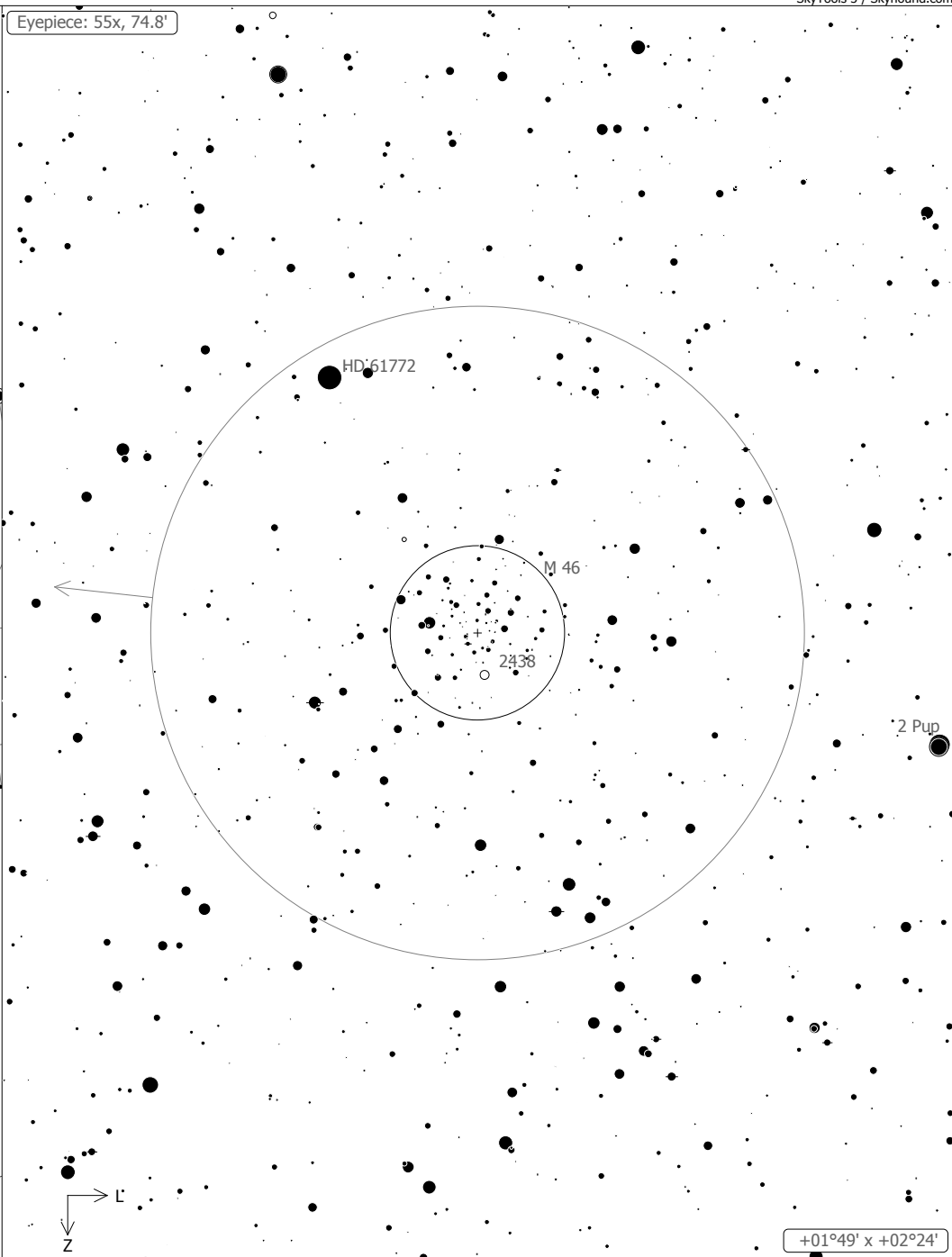
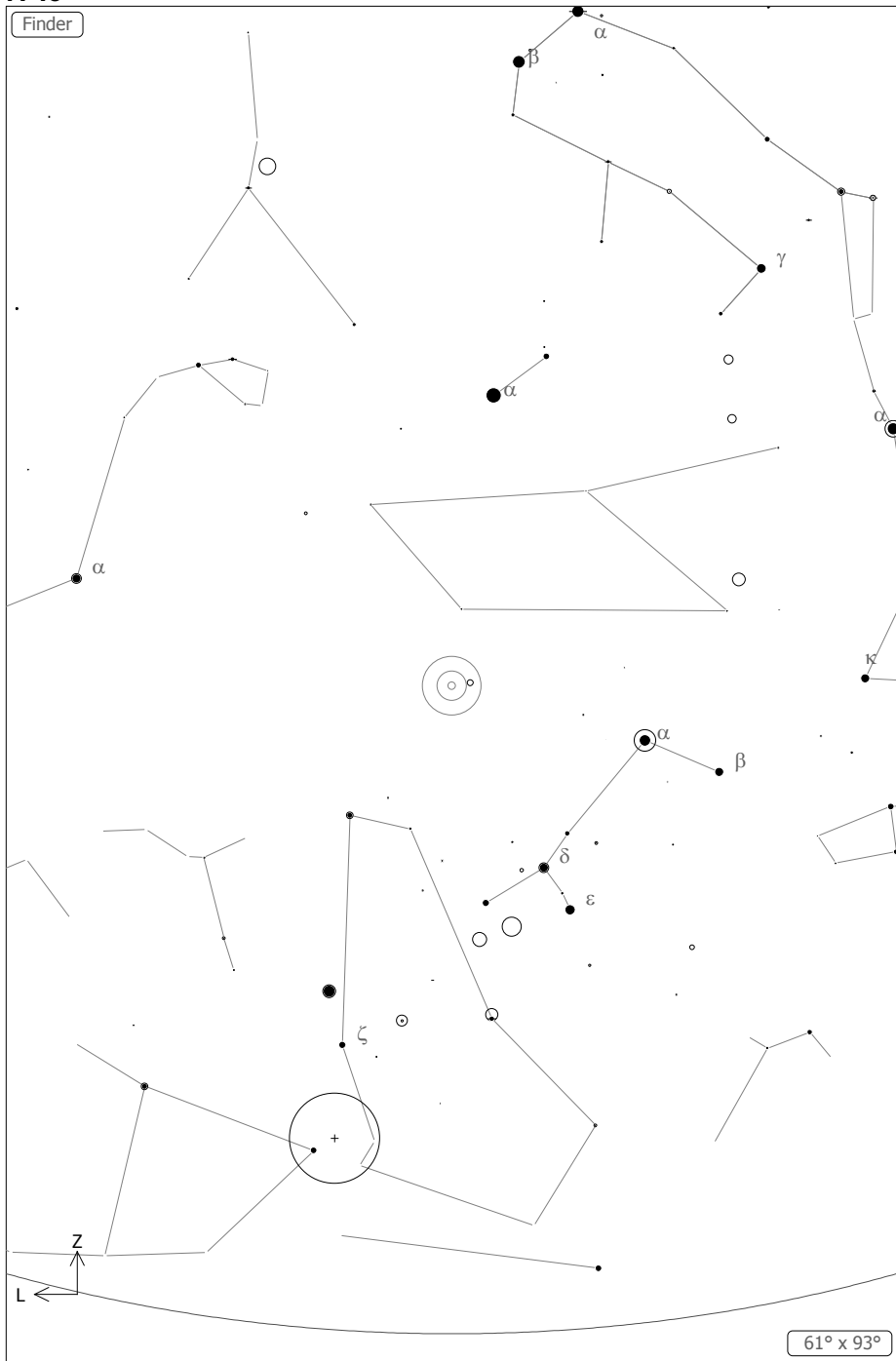


Finder

Eyepiece: 55x, 74.8'



2016 February 12 22:54, Benson Arizona  
Fully dark ML 12.9 target detectable

Discovery DSH 8, TeleVue Panoptic 22mm eyepiece  
M 46 (Open Cluster)

aka NGC 2437, Collinder 159, Melotte 75, Raab 62, OCL 601, OC  
354 R.A.: 07h41m46.0s Dec.: -14°48'36" J2000 (Pup)

